

**Easy Read**

Toolkit for local housing strategies

for autistic adults and adults with a learning disability

Step 10: What is the benefit to the community and to the environment?



This step is about the wider benefits of housing for autistic adults and adults with a learning disability. These are called social values.

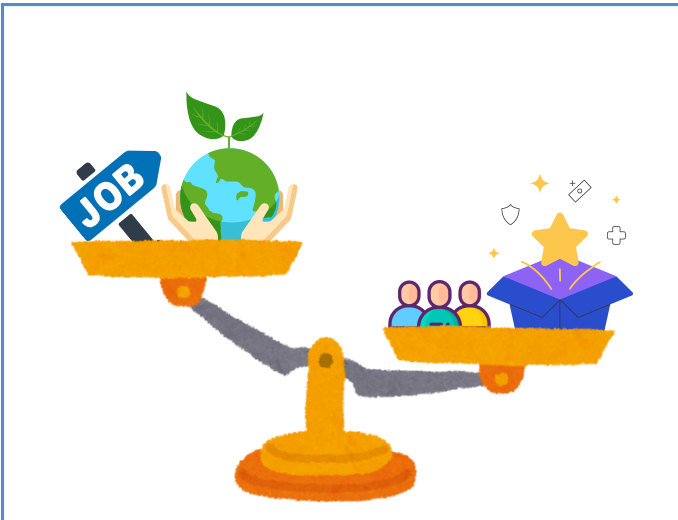


For example, building new housing can create jobs, help people to connect with their community, and help the environment by using less energy.

How can I contribute to this step? Some examples:



I understand the wider benefits of developing housing for autistic adults and adults with a learning disability to the community, and for the environment.



I decide what benefits are most important to me and should be included in the strategy.

First published in Great Britain in March 2025 by the Social Care Institute for Excellence

© SCIE All rights reserved

www.scie.org.uk

Updated in March 2025

Toolkit available at: <https://www.scie.org.uk/housing/toolkit-for-place-based-strategies-for-housing-for-autistic-adults-and-adults-with-a-learning-disability/>