



Easy Read

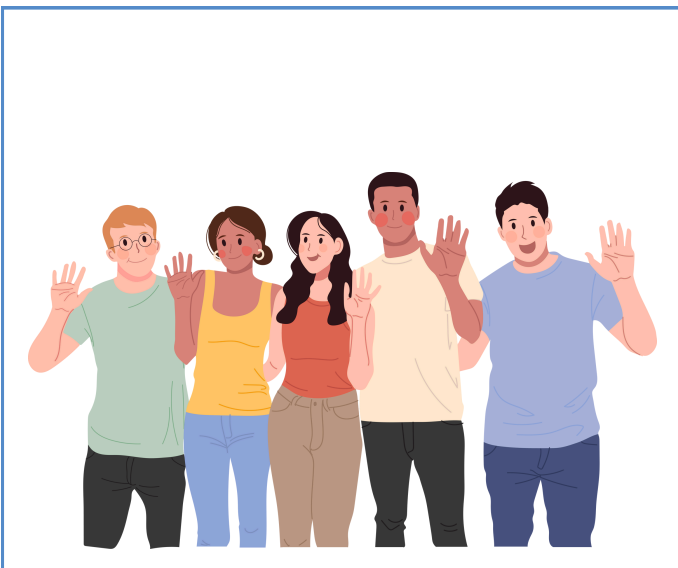
Toolkit for local housing strategies

for autistic adults and adults with a learning disability

Step 1: How many people need housing?



This step is about how much housing is needed now and in the future.



We will find out how many autistic adults and adults with a learning disability need housing now and how many will need housing in the future.

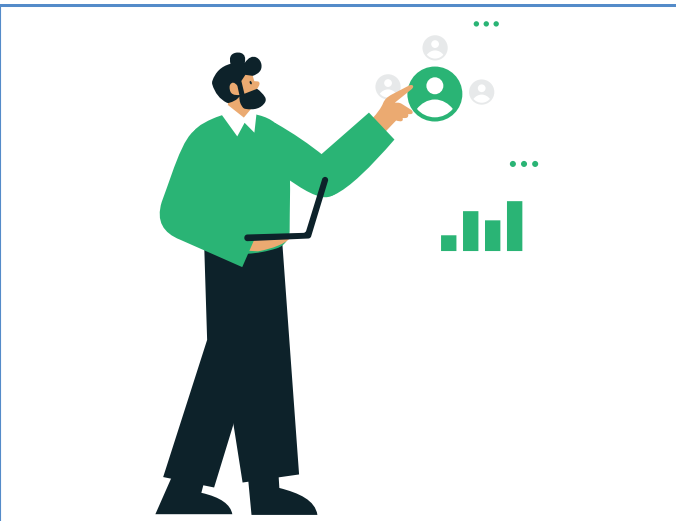
How can I contribute to this step? Some examples:



I help to decide how much housing is needed for autistic adults and adults with a learning disability.



I help to find out how many autistic adults and adults with a learning disability are living in the area and how many are needing housing.



I help to understand how many autistic adults and adults with a learning disability will need housing in the future.

First published in Great Britain in March 2025 by the Social Care Institute for Excellence

© SCIE All rights reserved

www.scie.org.uk

Updated in March 2025

Toolkit available at: <https://www.scie.org.uk/housing/toolkit-for-place-based-strategies-for-housing-for-autistic-adults-and-adults-with-a-learning-disability/>